

of Fires: 2024 till Yesterday



1660

Forest



1177

Fruitful Trees



6100

Grasslands

Beirut, Lebanon



18°

Sunny

06:34 ☀️ 16:32 EET

Feels Like: 18°C

Wind: 8km/H WNW

Humidity: 34%

Pressure: 1027.09mbar

UV Index: 3

Mon

19°C / 14°C



Tue

18°C / 14°C



Wed

19°C / 13°C



Fire Danger Index

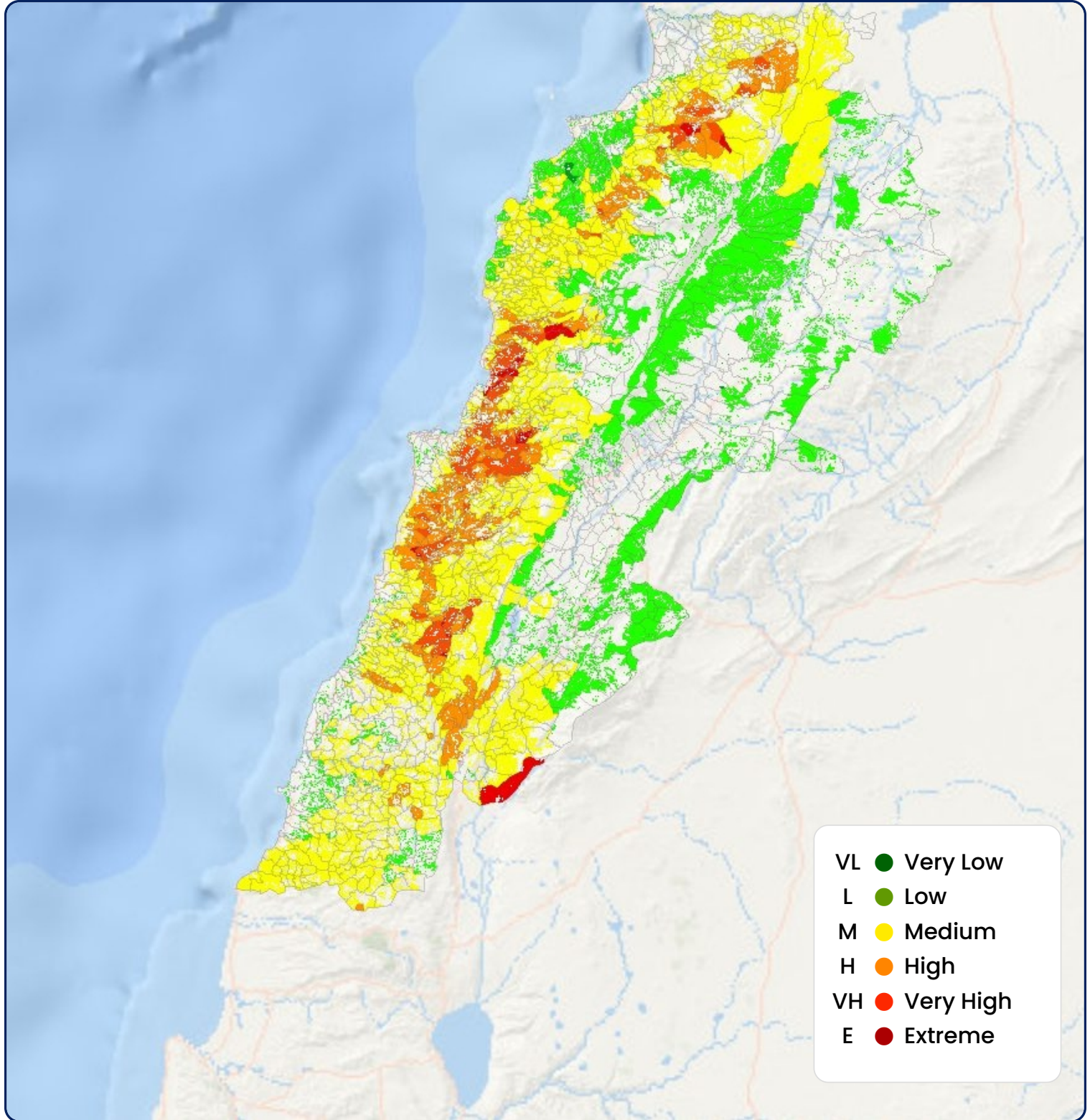
- **Very low possibility of any fire occurrence.**
Fires can be easily extinguished. We actively inform citizens about the necessity of avoiding any form of fire-setting.
- **Low possibility of fire occurrence.**
Fires can mostly occur in grass and small shrubs. Controlling fires can be easily achieved. Informing citizens about the imperative need to refrain from setting fires for any reason is emphasized.
- **Moderate possibility of fire occurrence.**
Fires can be controlled at early stages; however, they could escalate if not promptly extinguished. Highlighting citizens' importance in refraining from setting fires is crucial, and municipal police should monitor activities in forests and agricultural areas.
- **High possibility of fire occurrence and spread.**
High likelihood of extensive, challenging-to-control wildfires poses a threat to homes, infrastructure, protected forest areas, and natural reserves. Urging citizens to abstain from starting fires is crucial. Municipal police conduct daily patrols to deter fire ignition in forests and agricultural areas. Local firefighting equipment remains ready for prompt intervention in case of a wildfire outbreak.
- **Very high possibility of fire occurrence and spread.**
There is an extremely high likelihood of wildfires occurring and spreading extensively, posing an uncontrollable threat due to their rapid and dense nature. These fires significantly impact large areas, including forests, natural reserves, homes, and structures, all highly susceptible to the extreme danger of wildfires. Municipal police patrol every two hours, actively preventing citizens from starting fires in forests and agricultural areas. Local firefighting equipment is always ready for immediate intervention. Emphasis is placed on reporting any fire promptly, regardless of size, to civil defense. Municipal police and firefighting teams swiftly respond to reported smoke, taking immediate action to extinguish any fire and mitigate risks effectively.
- **Extreme conditions of fire occurrence and spread.**
There is a severe probability of wildfires occurring and spreading. Continuous patrols by municipal police deter citizens from starting fires in forests and agricultural areas. Local firefighting equipment is always ready for immediate deployment to sensitive locations. Ensuring a water source is crucial, and prompt reporting of any fire, regardless of size, to civil defense is emphasized. Municipal police and firefighting teams promptly respond to reported smoke, working to extinguish any fire immediately. If the local group cannot control the fire, seeking support from civil defense is prioritized.

Hotlines

- Civil Defence (125)**
- Ministry of Interior & Municipalities (1766)**
- Lebanese Red Cross (140)**
- Internal Security Forces (112)**
- Army Command Operations (117)**

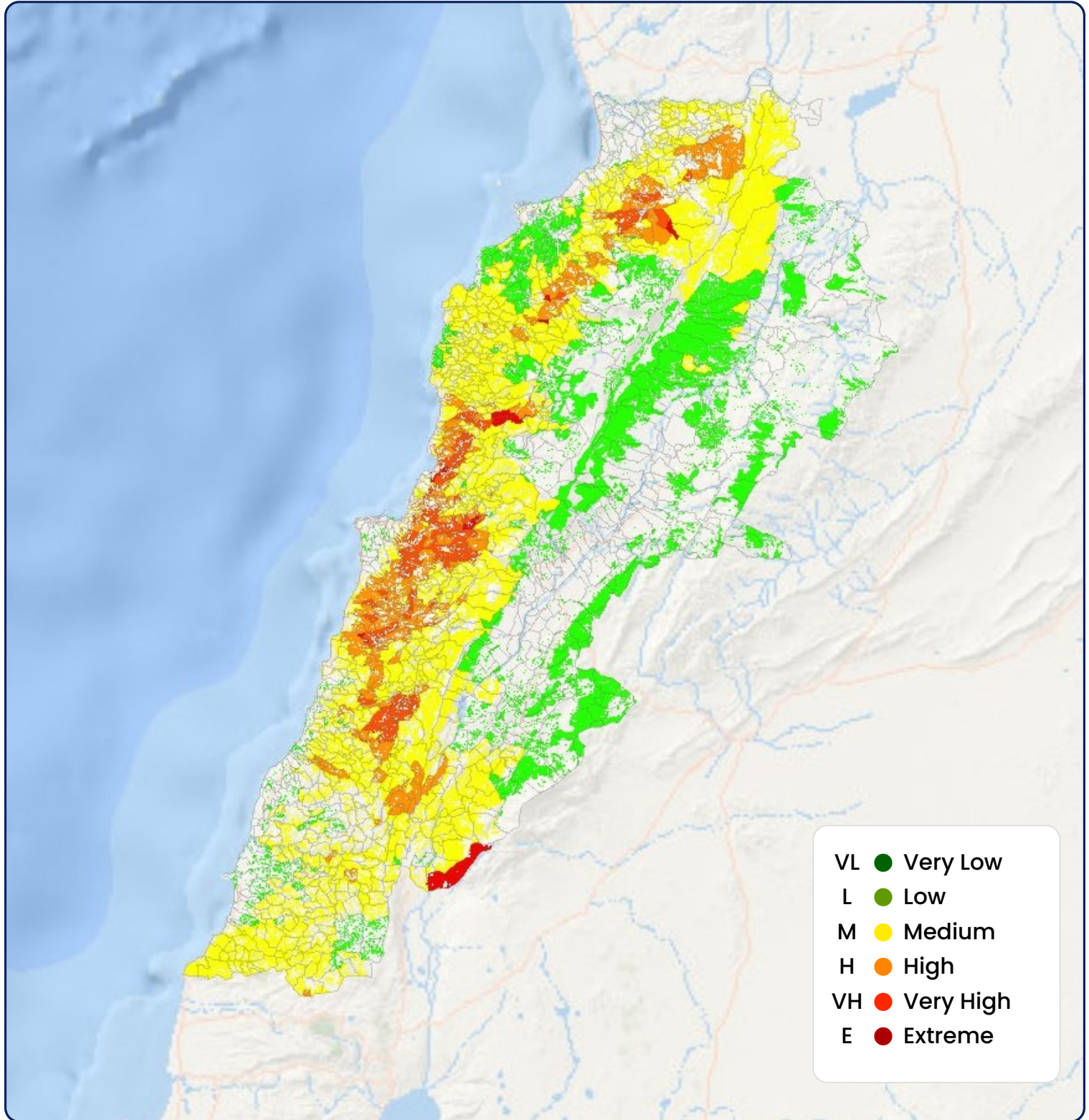
The fire forecast is based on the cross tabulation between the fire weatherindex (RISICO model) and the fire risk map of Lebanon (Abdallah et al., 2021)

15th December, 2024



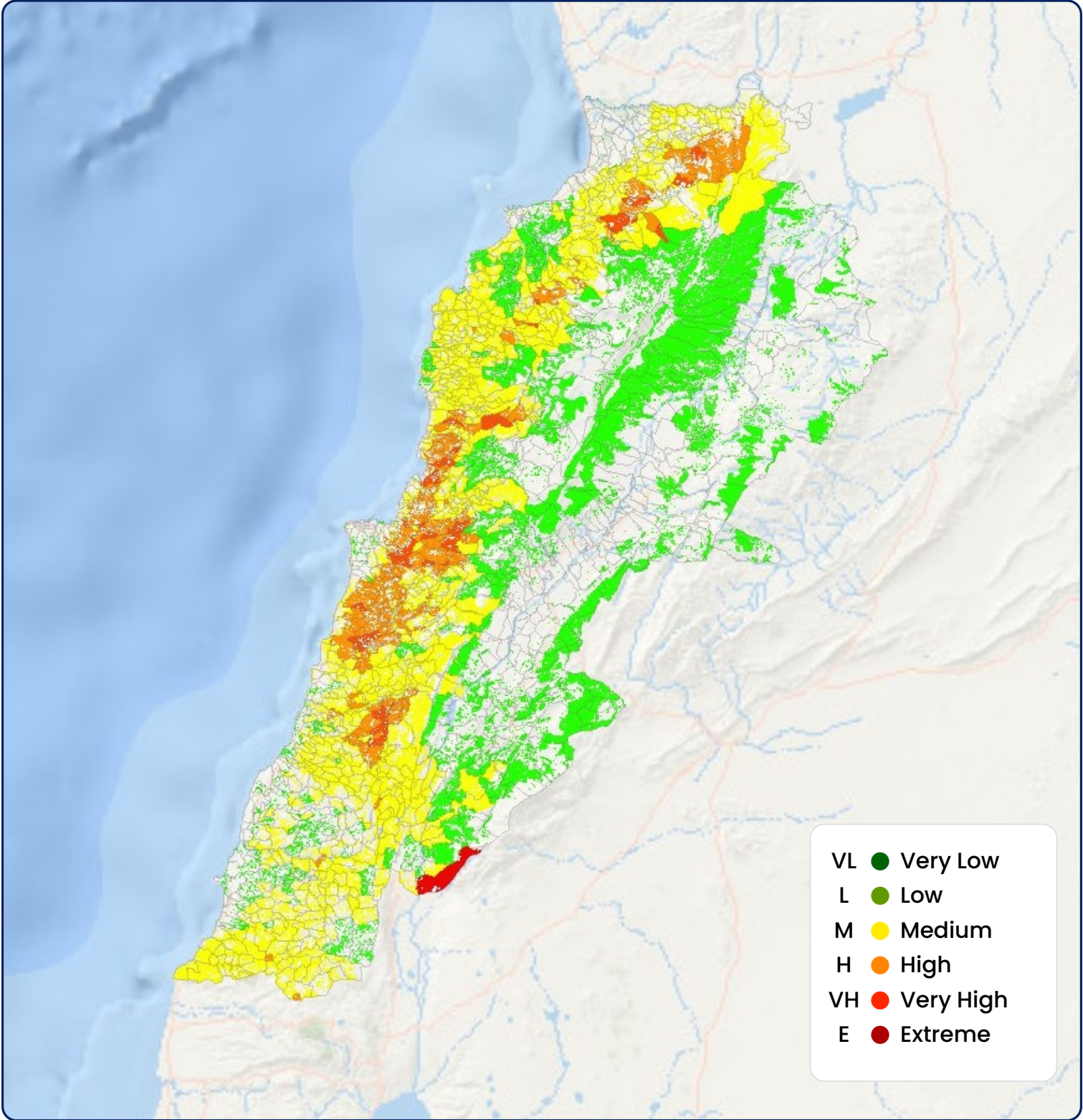
The fire forecast is based on the cross tabulation between the fire weatherindex (RISICO model) and the fire risk map of Lebanon (Abdallah et al., 2021)

16th December, 2024



The fire forecast is based on the cross tabulation between the fire weatherindex (RISICO model) and the fire risk map of Lebanon (Abdallah et al., 2021)

17th December, 2024



The fire forecast is based on the cross tabulation between the fire weatherindex (RISICO model) and the fire risk map of Lebanon (Abdallah et al., 2021)

of Fires: 2024 till Yesterday



427

Forest



447

Fruitful Trees



1197

Grasslands

Akkar



Sunny
06:34 ☀️ 16:29 EET

Feels Like: 17°C
Wind: 10km/H W
Humidity: 51%
Pressure: 1026.75mbar
UV Index: 3

| Mon | Tue | Wed |
|-------------|-------------|-------------|
| 18°C / 12°C | 18°C / 11°C | 18°C / 11°C |
| | | |

Hotlines

- Civil Defence (125)**
- Ministry of Interior & Municipalities (1766)**
- Lebanese Red Cross (140)**
- Internal Security Forces (112)**
- Army Command Operations (117)**
- Emergency (76/116677)**

Akkar

| City / Village | 15 Dec | 16 Dec | 17 Dec |
|----------------------|--------|--------|--------|
| Halba | M | M | M |
| Cheikh Mohammad | M | M | M |
| Nfisse | M | M | M |
| Idbil | M | M | M |
| Kroum El Aarab | M | M | M |
| Cheikh Taba Es Sahl | L | L | L |
| Cheikh Taba | M | M | M |
| Jdidet Ej Joumeh | M | M | M |
| Daouret Aakkar | VH | L | VH |
| Zouarib | M | M | M |
| Majdel Akkar | M | M | M |
| Minyara | M | M | M |
| Hakour | M | M | M |
| Karm Aasfour | M | M | M |
| Mazraat Beit Ghattas | M | M | L |
| Qantarat Aakkar | M | M | M |
| Machha | M | M | M |
| Hayzouq | M | M | M |

| City / Village | 15 Dec | 16 Dec | 17 Dec |
|--------------------|--------|--------|--------|
| Qloud El Baqie | M | M | M |
| Dinbou | L | L | L |
| Chane | L | L | L |
| Beit Younes | M | M | M |
| Houaich | M | M | M |
| Sfaynet El Qaitaa | M | M | M |
| Qabaait | L | L | L |
| Habchit | VH | VH | VH |
| Sadaqa | L | M | M |
| Hrar | L | L | M |
| Khreibet Aakkar | L | L | L |
| Hmaire Aakkar | M | M | M |
| Qraiyyat | M | M | L |
| Beit Ayoub | M | M | M |
| Qardaf | M | M | M |
| Jdeidet El Qaitaa | M | M | M |
| Aayoun El Ghizlane | M | M | M |
| Michmich Aakkar | M | M | M |

| | | | |
|------------------------|---|---|---|
| Aarqa | L | L | L |
| Souaisset Aakkar | M | M | M |
| Illat | M | M | M |
| Bqerzla | M | M | M |
| Deir Dalloum | L | L | M |
| Zouq El Hosniye | M | M | M |
| Zouq El Hbalsa | M | M | M |
| Dahr Laissine | M | M | M |
| Kfar Harra | M | M | M |
| Balde WaMazraatBalde | M | M | M |
| Zouq El Hadara | M | M | M |
| Zouq El Moqachrine | M | M | M |
| Jebraysel | M | M | M |
| Mar Touma | M | M | M |
| Hedd | M | M | L |
| Tikrit | M | M | M |
| Beit Mellat | M | M | M |
| Beino | L | L | L |
| Aayoun Aakkar | M | M | M |
| Qboula | M | M | M |
| Chaqdouf | L | L | L |
| Borj Aakkar | L | L | L |
| Aaiyat | L | L | L |
| Aain Yaaqoub | L | L | L |
| Bezbinda | L | L | L |
| Aakkar El Aatiqa | L | L | L |
| Tall Aabbas El Gharbi | L | L | L |
| Tall Aabbas Ech Charqi | L | L | L |
| Koueikhat | M | M | M |
| Khreibet Ej Jindi | M | M | M |
| Haouchab | M | M | M |
| Hokr Etti | M | M | M |
| Chir Hmairine | M | M | M |
| Darine | M | M | M |
| Massaoudiye | L | L | L |
| Qaabrine | L | L | L |
| Kfar Melki Aakkar | L | L | L |

| | | | |
|----------------------|----|----|----|
| Qornet Aakkar | L | L | L |
| Fnaydeq | M | M | M |
| Majdala | M | M | M |
| Tshea | VH | L | VH |
| Rahbe | M | M | M |
| Ouadi El Jamous | M | M | M |
| Beit El Haouch | M | M | M |
| Menneaa | VH | VH | VH |
| Cheikhlar | M | M | M |
| Rmah | M | M | M |
| Kfar Noun | M | M | M |
| Barde | M | M | M |
| Khirbet Er Remmane | M | M | M |
| Sindianet Zeidane | L | L | L |
| Fraydes Aakkar | M | M | M |
| Mounjez | M | M | M |
| Qsair Aakkar | M | M | M |
| Biret Aakkar | M | M | M |
| Khirbet Daoud Aakkar | M | M | M |
| Daghle | M | M | M |
| Aaouaainat Aakkar | M | M | M |
| Aamriyet Aakkar | M | M | M |
| Kafr | M | M | M |
| Bsatine Aakkar | M | M | M |
| Aain Ez Zeit | M | M | M |
| Kouachra | M | M | M |
| Khalsa | M | M | M |
| Khirbet Char | M | M | M |
| Dibbabiye | M | M | M |
| Berbara Aakkar | M | M | M |
| Aain Tinta | M | M | M |
| Machta Hammoud | M | M | M |
| Baghdadi | M | M | M |
| Deir Jannine | M | M | M |
| Douair Aadouiye | M | M | M |
| Noura Et Tahta | M | M | M |
| Sf inet Ed Draib | M | M | M |

| | | | |
|-----------------------|---|---|---|
| Tall Bire | L | L | L |
| Tall Hmayra | L | L | L |
| Hokr Jouret Srar | L | M | M |
| Barcha | M | M | M |
| Tall Sebaal | L | L | L |
| Aabboudiye | M | M | M |
| Hokr Ed Dahri | L | L | L |
| Kharnoubet Aakkar | M | M | M |
| Mqaiteaa | L | L | L |
| Janine | M | M | M |
| Aamaret Aakkar | L | L | L |
| Cheikh Zennad | L | L | L |
| Qoubber Chamra | L | L | L |
| Sammaqiye | L | L | L |
| AAridet Cheikh Zennad | L | L | L |
| Bebnine | L | M | M |
| Mhammaret | L | L | M |
| Rmoul | L | L | L |
| Sayssouq | M | M | M |
| berqayel | M | M | M |
| Bzal | L | L | M |

| | | | |
|-----------------------|---|---|---|
| Aamaret El Baykat | M | M | M |
| Msalla | M | M | M |
| Qachlaq | M | M | M |
| Ouadi El Haour | M | M | M |
| Charbila | M | M | M |
| Tleil | M | M | M |
| Mzeihme | M | M | M |
| Haytla | M | M | M |
| Knisse | M | M | M |
| Rihaniyet Aakkar | M | M | M |
| Saidnaya | M | M | M |
| Hmaiss Aakkar | M | M | M |
| Srar | M | M | M |
| Ghazayle | M | M | M |
| Aarme | M | M | M |
| Mazraat En Nahriye | M | M | M |
| Qbaiyat Aakkar | L | L | L |
| Aandqet | M | M | L |
| Aamayer | M | M | M |
| Hnaider | L | L | L |
| Mazareaa Jabal Akroum | M | M | M |

of Fires: 2024 till Yesterday



226

Forest



156

Fruitful Trees



740

Grasslands

North



18°

Sunny

06:34 - 16:30 EET

Feels Like: 18°C

Wind: 11km/H WSW

Humidity: 47%

Pressure: 1026.41mbar

UV Index: 3

Mon

18°C / 13°C



Tue

18°C / 13°C



Wed

18°C / 13°C



Hotlines



Civil Defence (125)



Ministry of Interior & Municipalities (1766)



Lebanese Red Cross (140)



Internal Security Forces (112)



Army Command Operations (117)



Emergency (06/4333328)

Tripoli

| City / Village | 15 Dec | 16 Dec | 17 Dec | City / Village | 15 Dec | 16 Dec | 17 Dec |
|---------------------------------|--------|--------|--------|-------------------|--------|--------|--------|
| Trablous Ez Zeitoun | L | L | L | Trablous El Qobbe | VL | VL | VL |
| Trablous El Haddadine El Mharta | L | L | L | Trablous jardins | L | L | L |
| Trablous Et Tell | L | L | L | Mina N:2 | L | L | L |
| Trablous En Nouri | VL | VL | VL | Mina N:3 | L | L | L |
| Trablous El Mharta | L | L | L | Mina Jardin | L | L | L |
| Trablous Es Souayqa | L | L | L | Qalamoun | M | M | M |

Koura

| City / Village | 15 Dec | 16 Dec | 17 Dec | City / Village | 15 Dec | 16 Dec | 17 Dec |
|----------------------|--------|--------|--------|--------------------|--------|--------|--------|
| Amioun | L | L | L | Kfar Hata El Koura | L | M | M |
| Kfar Aaqqa | L | L | L | Ijdaabrine | M | M | M |
| Kfar Saroun El Koura | L | L | L | Batroumine | VL | L | L |
| Bechmizine | L | L | L | Badbhoun | M | M | M |
| Bterram | L | L | L | Barghoun | M | M | M |
| Bziza | L | L | L | Bednayel El Koura | M | M | M |

| | | | |
|--------------------|----|---|---|
| Kfar Hazir | M | M | M |
| Bsarma | M | M | M |
| Aafsdiaq | M | M | M |
| Dar Chmizzine | M | M | M |
| Dar Baaechtar | M | M | M |
| Bhabbouch El Koura | L | L | M |
| Ain Aakrine | L | M | M |
| Kousba | M | M | M |
| Rechdibbine | M | M | M |
| Bnehran | M | M | M |
| Aaba | L | L | L |
| Bdebba | VL | L | L |
| Fiaa | M | M | M |
| Majdel el Koura | M | M | M |
| Kaftoun | M | M | M |
| Btaaboura | L | M | M |

| | | | |
|---------------------|---|---|---|
| Kfar Kahel | M | M | M |
| Btouratij | L | L | L |
| Qalhat | L | L | L |
| Deir El Balamand | L | L | M |
| Zakroun | L | L | M |
| Kafraya El Koura | M | M | M |
| Dedde | L | L | M |
| Enfe | L | L | L |
| Hraiche | L | L | L |
| Ras Masqa | L | L | M |
| Barsa | L | M | M |
| Bkeftine | L | L | L |
| Nakhle | L | L | L |
| Bqaiaa El Koura | L | L | L |
| Zgharta El Mtaouile | L | L | L |

Zgharta

| City / Village | 15 Dec | 16 Dec | 17 Dec |
|-------------------|--------|--------|--------|
| Zgharta | L | L | L |
| Aardat | L | L | L |
| Kfardlaqous | L | L | L |
| Rachaaine | L | L | L |
| Qarah Bach | L | L | L |
| Kfarhata Zgharta | L | L | L |
| Arde | L | L | L |
| Asnoun | L | L | L |
| Mazraat Ajbeaa | L | L | L |
| Mejdlaiya Zgharta | L | L | L |
| Hariq Zgharta | L | L | L |
| Aalma | L | L | L |
| Mazraat Jnaid | L | L | L |
| Deir Jdeide | L | L | L |
| Khaldiye | L | L | L |
| Iaal | M | M | M |
| Kfarhoura | L | L | L |

| City / Village | 15 Dec | 16 Dec | 17 Dec |
|-------------------|--------|--------|--------|
| Aarjis | L | L | L |
| Daraiya Zgharta | L | M | L |
| Kfarfou | M | M | M |
| Ras Kifa | M | M | M |
| Karm Sadde | L | L | L |
| Tallet Zgharta | L | L | L |
| Ehden | L | L | L |
| Beslouqit | M | M | M |
| Aintourine | M | M | M |
| Kfarsghab | L | L | L |
| Aarbet Qozhaiya | M | M | M |
| Toula Zgharta | L | L | L |
| Mazraat Et Teffah | L | L | M |
| Bhairret Toula | L | L | L |
| Ayto | L | L | L |
| Miziara | L | L | M |
| Seraal | L | VH | L |

| | | | |
|----------------|---|---|---|
| Kfarzaina | L | L | L |
| Kfarchakhna | L | L | L |
| Bsebaal | L | L | L |
| Sakhra | M | M | L |
| Houakir | M | M | M |
| Kfaryachit | L | L | L |
| Morh Kfarsghab | M | M | M |
| Bchannine | M | M | M |
| Bnechaai | M | M | M |

| | | | |
|----------------|---|---|---|
| Sebaal Zgharta | L | L | M |
| Danha | M | M | M |
| Aachach | L | L | L |
| Miriata | L | L | L |
| Hailan | M | M | M |
| Boussit | L | M | M |
| Mzraat Kefraya | M | M | M |
| Hraiqis | L | M | M |
| Ijbaa | M | M | M |

Batroun

| City / Village | 15 Dec | 16 Dec | 17 Dec |
|-------------------------|--------|--------|--------|
| Batroun | M | M | M |
| Rachana | L | M | M |
| Thoum | L | L | L |
| Kfar Aabida | L | L | M |
| Koubba | M | M | M |
| Selaata | L | M | M |
| Heri | L | L | L |
| Chikka | L | L | M |
| Dahr Abi Yaghi | M | M | M |
| Toula El Batroun | M | M | M |
| Masrah | M | M | M |
| Daraya El Batroun | M | M | M |
| AAbdelli | M | M | M |
| Douq | M | M | L |
| Jrabta El Batroun | M | M | M |
| Chibtine | M | M | M |
| Deir Kifane | M | M | M |
| Sghar | M | M | M |
| Mar Mama | M | M | M |
| Deir Mar Youssef Jrabta | M | M | M |
| Mrah Ez Ziyat | M | M | M |
| Ghouma | M | M | M |
| Kfifane | M | M | M |
| Jrane El Batroun | M | M | M |

| City / Village | 15 Dec | 16 Dec | 17 Dec |
|------------------------------|--------|--------|--------|
| Kfarb Shlaimane | M | M | M |
| Edde El Batroun | M | M | M |
| Sourat El Batroun | M | M | M |
| Assia | M | M | M |
| Bijdarfil | M | M | M |
| Ijdabra | M | M | M |
| Helta | M | M | M |
| Aabrine | M | M | M |
| Kfar Hay | M | M | M |
| Nahle El Batroun | M | M | M |
| Jebba | M | M | M |
| Rachkida | M | M | M |
| Boqsmaiya | M | M | M |
| Daael | M | M | M |
| Kfar Khollos | M | M | M |
| Qatnaaoun | M | M | M |
| Ras Nahhach | M | M | M |
| Ouajh El Hajjar | L | M | M |
| Hamat | M | M | M |
| Douma | M | M | L |
| Bcheadli | M | M | M |
| Beit Chlala | M | M | M |
| Deir Mar Youhanna EL Batroun | L | L | M |
| Bechtoudar | M | L | L |

| | | | | | | | |
|-------------------|---|---|---|-----------------------|---|---|---|
| Mehmarch | L | L | L | Kfar Hilda | M | M | M |
| Aalali | M | M | M | Kfour El Aarbi | M | M | M |
| Smar Jbayl | L | M | M | Ram El Batroun | M | M | M |
| Kfar Hatna | M | M | M | Hadtoun | M | M | M |
| Zane | M | M | M | Tannourine Et Tahta | M | M | M |
| Ftahat El Batroun | M | M | M | Hardine | M | M | M |
| Kour | M | M | M | Chatine | M | M | M |
| Racha | M | M | M | Beit Kassab | L | L | M |
| Basbina | M | M | M | Deir Billa | M | M | M |
| Aartiz | M | M | M | Niha El Batroun | M | M | M |
| Harbouna | L | L | L | Ouata Houb | M | M | L |
| Mrah El Hajj | M | M | M | Tannourine El Fauouqa | L | L | L |
| Mrah Chdid | L | L | M | | | | |

Bcharre

| City / Village | 15 Dec | 16 Dec | 17 Dec | City / Village | 15 Dec | 16 Dec | 17 Dec |
|-------------------|--------|--------|--------|-----------------|--------|--------|--------|
| Mchaa Ej Jibbe | L | L | L | Bane | L | L | L |
| Beit Menzer | L | L | L | Blaouza | M | M | M |
| Qnayouer | M | M | M | Moghr El Ahoual | VH | E | VH |
| Billa | M | M | M | Breissat | L | M | L |
| Aabdine | L | L | M | Dimane | L | L | L |
| Tourza | L | L | M | Metrit | M | M | M |
| Qnat | M | M | M | Hasroun | L | L | L |
| Haqath Ej Jebbe | M | M | M | Hadchit | M | M | L |
| Mazraat Bani Saab | M | M | M | Bazaouun | L | L | L |
| Berhalioun | M | L | M | Bqerqacha | L | L | L |
| Ouadi Qannoubine | M | M | M | Bcharre | M | M | M |
| Mazraat Aassaf | VH | E | VH | Bqaa Kafra | L | L | L |


Minieh-Danieh

| City / Village | 15 Dec | 16 Dec | 17 Dec | City / Village | 15 Dec | 16 Dec | 17 Dec |
|-------------------|--------|--------|--------|-----------------|--------|--------|--------|
| Beddaoui | L | L | L | Mrah Es Srayj | M | M | M |
| Deir Aammar | L | L | L | Qraine | M | M | M |
| Borj El Yahoudiye | M | M | M | Haouaret Miniye | L | M | M |
| Nabi Youcheaa | L | L | L | Debaael | E | VH | VH |


| | | | |
|---------------------|----|----|----|
| Minie | L | L | L |
| Rihaniyet Miniye | M | M | M |
| Zouq Bhannine | L | M | M |
| Sir Ed Danniye | M | M | L |
| Aassoun | L | L | M |
| Mazraat Ketrane | L | L | M |
| Qattine Miniye | M | M | L |
| Bqaa Sefrine | L | L | L |
| Bqarsouna | M | M | L |
| Hazmiyet Miniye | M | M | M |
| tarane | VH | VH | L |
| Mimrine | M | M | L |
| Beit El Faqs | L | L | L |
| Mrah Es Sfire | M | M | L |
| Aain Et Tine Miniye | M | M | M |
| Kharroub Miniye | VH | L | M |
| Sfire | L | L | M |
| Qarsaita | M | M | M |
| Izal | M | M | M |
| Btermaz | VH | VH | VH |
| Qemmamine | E | E | VH |
| Harf Es Sayad | VH | VH | L |
| Karm El Mohr | L | L | M |
| Beit Zoud | M | M | M |

| | | | |
|------------------|----|----|---|
| Beit Haouik | L | L | M |
| Jayroun | L | L | M |
| Bechnnata | M | M | M |
| Qarhaiya | VH | VH | L |
| Aazqai | L | L | M |
| Aasaymout | L | L | M |
| Kfar Chellane | M | M | M |
| Kfar Habou | M | M | M |
| Aaymar | L | L | M |
| Zaghartaghriine | M | M | M |
| Behouaita | M | M | M |
| Kahf El Malloul | M | M | M |
| Jarjour | L | L | M |
| Deir Nbouh | M | M | M |
| Bechehhara | M | M | M |
| Merkebta | M | M | M |
| Raouda Aadoua | M | M | M |
| Qarne | VH | VH | L |
| Mrebbine | M | M | L |
| Terbol Miniye | L | L | L |
| Mazraat El Kreme | L | L | L |
| Bakhaaoun | M | M | M |
| Kfar Bibnine | L | L | M |


of Fires: 2024 till Yesterday



449
Forest




130
Fruitful Trees






1712
Grasslands

Mount Lebanon



18°
Fair
06:34 ☀️ 16:32 EET

Feels Like: 18°C
Wind: 10km/H W
Humidity: 37%
Pressure: 1029.12mbar
UV Index: 3

| Mon | Tue | Wed |
|---|---|---|
| 18°C / 12°C | 18°C / 11°C | 18°C / 11°C |
|  |  |  |

Hotlines

 **Civil Defence (125)**

 **Internal Security Forces (112)**

 **Ministry of Interior & Municipalities (1766)**

 **Army Command Operations (117)**

 **Lebanese Red Cross (140)**

 **Emergency (03/729711)**

Baabda

| City / Village | 15 Dec | 16 Dec | 17 Dec | City / Village | 15 Dec | 16 Dec | 17 Dec |
|---------------------------|--------|--------|--------|------------------|--------|--------|--------|
| Chiyah | L | L | L | Chouit | VH | VH | VH |
| Furn Ech Chebbak | L | L | L | Qobbayaa | M | M | M |
| Haret Hreik | L | L | L | Qordata | L | L | M |
| Laylake | VL | VL | VL | Qsaibe Baabda | L | L | L |
| Bourj El Brajneh | L | L | L | Deir El harf | VH | VH | L |
| Tahouitat El Ghadir | L | L | L | Aaraiya | VH | VH | VH |
| Baabda | M | M | M | Zandouqa | L | VH | L |
| Hadath Beyrouth | M | M | M | Kneisset Baabda | L | L | L |
| Boutchay | L | L | L | Aarbaniye | VH | VH | L |
| Merdache | M | L | M | Dlaybe | VH | VH | L |
| Louayze Baabda | VH | VH | VH | Salima Baabda | VH | VH | VH |
| Kfar Chima | M | M | M | Hasbaiya El Matn | VH | VH | L |
| Ouadi Chahrour Es Soufla | L | L | L | Hammana | M | M | M |
| Ouadi Chahrour El Aaoulia | L | VH | L | Qalaat Baabda | VH | VH | L |
| Haret Es Sit | L | VH | L | Khalouat Baabda | VH | VH | L |

| | | | |
|----------------------|----|----|----|
| Bsaba Baabda | L | L | L |
| Baalchmay | M | M | M |
| Aain Mouaffaq | M | M | M |
| Rouayssrt El Ballout | L | L | L |
| Mzairaa Baabda | VH | VH | VH |
| Hlaliye Baabda | VH | VH | VH |
| Haret Hamze | L | VH | L |
| Qtale Baabda | L | L | L |
| Ras El Href | L | L | L |
| Deir Khouna | VH | VH | L |
| Aabadiye | L | L | L |
| Qrayet Baabda | M | M | M |
| Chmeisset Baabda | VH | VH | VH |
| Ras El Matn | VH | VH | L |

| | | | |
|-----------------|----|----|----|
| Chbaniye | M | M | M |
| Khreibet Baabda | L | L | L |
| Bmaryam | VH | VH | L |
| Btekhnyay | VH | VH | L |
| Falougha | M | M | L |
| Btibyat | VH | VH | L |
| Qornayel | L | L | M |
| Jouar El Haouz | M | M | M |
| Bzebdine | L | L | L |
| Arsoun | VH | VH | VH |
| Kfar Selouane | M | M | L |
| Tarchich | M | M | L |
| Jouret Arsoun | VH | VH | L |

El Metn

| City / Village | 15 Dec | 16 Dec | 17 Dec |
|---------------------|--------|--------|--------|
| Bourj Hammoud | L | L | L |
| Sinn El Fil | L | L | L |
| Jdaidet El Matn | M | M | M |
| Baouchriye | M | M | M |
| Deir mar Roukoz | L | L | L |
| Dekouane | M | M | M |
| Mkalles | M | L | M |
| Antelias | M | M | M |
| Menqlet Mezher | L | L | L |
| Jall Ed Did | M | M | L |
| Naqqach | M | L | M |
| Aamaret Chalhoub | L | L | L |
| Zalqa | M | M | M |
| Byaqout | L | L | L |
| Mazraat El Hdaira | L | L | L |
| Dbaye | L | L | L |
| Haret El Ballane | M | M | M |
| Mazraat Deir Aoukar | M | M | M |
| Mansouriyet El Matn | L | L | L |

| City / Village | 15 Dec | 16 Dec | 17 Dec |
|------------------------|--------|--------|--------|
| Chaouiye | L | L | L |
| Aain Et Teffaha | M | M | M |
| Sfeilet Bikfaya | M | M | M |
| Fraike | L | L | L |
| Abou Mizane | M | M | M |
| Deir Chamra | M | M | M |
| Hbous | L | L | L |
| Jouar El Matn | M | M | M |
| Chrine | M | M | M |
| Qornet El Hamra | L | L | L |
| Broummana El Matn | L | L | L |
| Jouret El Ballout | VH | VH | VH |
| Masqa | VH | VH | VH |
| Aayoun El Matn | VH | VH | VH |
| Qennabet Broummana | M | M | M |
| Mzakke | VH | VH | L |
| Baabdat | VH | VH | L |
| Beit Meri | VH | VH | VH |
| Dahr Es Souane El Matn | L | L | L |

| | | | |
|----------------------------|----|----|----|
| Daychouniye | VH | VH | VH |
| Fanar | L | L | L |
| Aain Saade | VH | VH | L |
| Roumie | L | L | L |
| Bqennaya | M | M | M |
| Majzoub | VH | VH | VH |
| Bsalim | L | L | L |
| Nabay | VH | VH | L |
| Mtayleb | L | L | L |
| Beit El Kekko | VH | VH | L |
| Qornet Chehouane | VH | VH | L |
| Beit Ech Chaar | VH | VH | L |
| Dik El Mehdi | L | L | L |
| Zouk El Kharab | M | M | M |
| Aain Aar | VH | VH | L |
| Mazraat Yachouaa | L | L | M |
| Deir Tamich | L | VH | L |
| Zakrit | L | L | L |
| Deir Mar Aabda el Mchammar | L | L | L |
| Bikfaya | M | M | M |
| Mhaidset Matn | M | M | M |
| Ouadi Chahine | M | M | M |
| Aain El Qach | M | M | M |
| Mar Boutros Karm Et Tine | VH | VH | L |
| Beit Chabab | L | L | M |
| Bhersaf | M | M | M |
| Mayasse | L | L | M |
| Aain El Kharroube | M | M | M |
| Himlaya | M | M | M |
| aain Aalaq | M | M | M |
| Aatchane | L | L | L |

| | | | |
|------------------------|----|----|----|
| Qannebet Salima | VH | VH | VH |
| Bsifrine | E | E | VH |
| Mtain | M | M | L |
| Aain Ez Zeitoune | L | L | M |
| Mchikha | L | M | M |
| Khillet El Mtain | VH | VH | L |
| Bnabil | VH | VH | L |
| Aain es Sofsaf El Matn | L | L | L |
| Ouata El Mrouj | VH | VH | L |
| Mrouj | L | L | L |
| Marjaba | M | M | L |
| Aain Es Sindiane | E | E | VH |
| Zaraaoun | E | VH | VH |
| Qaaqour | E | E | VH |
| Khinchara | M | M | M |
| Aintoura El Matn | M | M | M |
| Choueir | L | L | L |
| Bteghrine | M | M | M |
| Douar El Matn | VH | VH | L |
| Chouaya El Matn | M | M | M |
| Aayroun | VH | VH | L |
| Zighrine El Matn | M | M | M |
| Majdel tarchich | L | L | L |
| Aain El Qabu | M | M | M |
| Kfar Aaqab | M | M | M |
| Mar Moussa Ed Douar | L | L | L |
| Machraah El Matn | L | L | M |
| Ouadi El Karm El Matn | M | M | M |
| Zabbougha | M | M | M |
| Baskinta | M | M | M |
| Kfar Tay El Matn | M | M | M |

Chouf

| City / Village | 15 Dec | 16 Dec | 17 Dec |
|----------------|--------|--------|--------|
| Damour | M | M | M |
| Naame | M | M | M |

| City / Village | 15 Dec | 16 Dec | 17 Dec |
|-------------------|--------|--------|--------|
| Mazraat Ed Douair | L | L | L |
| Kfar Faqoud | VH | VH | VH |

| | | | |
|------------------------------|----|----|----|
| Mechref | L | L | L |
| Chhim | M | M | M |
| mazboud | M | M | M |
| Dalhoun | M | M | M |
| Chammis Ech Chouf | M | M | M |
| Daraiya Ech Chouf | L | L | L |
| Ketermaya | L | L | L |
| maaniye | M | M | M |
| Ouadi Abou Youssef | VH | VH | VH |
| Aanout | L | L | M |
| Sibline | M | M | M |
| Bourjein | M | M | M |
| Barja | M | M | M |
| Bkechtine Ouel Mcheiaa | M | M | M |
| Baassir | M | M | M |
| Dibbiye | L | L | L |
| Benouati Ech Chouf | L | L | L |
| Jiye | M | M | M |
| Jadra | M | M | M |
| Chmaarine | VH | VH | VH |
| Dahr Ech Chouf | M | M | M |
| Aalmane Ech Chouf | M | M | M |
| Jmailiye | M | M | M |
| Rmeilet Ech Chouf | L | L | L |
| Majdalouna | M | M | M |
| Ouardaniye | L | L | L |
| Joun | M | M | M |
| Mghairiye Ech Chouf | M | M | M |
| Deir El Moukhalles Ech Chouf | VH | VH | L |
| Qreiaa | L | L | L |
| Bkifa Ech Chouf | L | L | M |
| Mazmoura | L | L | M |
| Mtolle | M | M | M |
| Mazraat Es Dahr | M | M | M |
| Khirbet Bisri | M | M | M |
| Jleiliye | M | M | M |
| Zaarouriye | L | L | M |

| | | | |
|----------------------|----|----|----|
| Deir Baba | VH | VH | VH |
| Sirjbal | VH | VH | VH |
| GHabet Jaafar | VH | VH | VH |
| Kfar Him | L | L | L |
| Ouadi Ed Deir | L | VH | L |
| Ouadi Es Sitt | VH | VH | L |
| Majdel El Meouch | L | L | M |
| Dmit | VH | VH | VH |
| Faouarat Jaafar | M | M | M |
| Biret Ech Chouf | L | L | M |
| Chourit | L | L | L |
| Kfar hay | M | M | M |
| Kfar Niss | M | M | M |
| Bqaiia Ech Chouf | E | E | VH |
| Brih | M | M | M |
| Moughayret Ech Chouf | E | E | VH |
| Ouarhaniye | M | M | M |
| Fraudis Ech Chouf | M | M | L |
| Aain Zhalta | M | M | M |
| Baaqline | M | M | M |
| Deir Dourit | L | L | L |
| Aainbal | M | L | M |
| Aathrine | M | M | M |
| Ouadi bnehlay | L | L | M |
| Gharife | M | M | M |
| Jahliye | L | L | L |
| Hasrout | M | M | M |
| Moukhtara | M | M | M |
| Botme | M | M | M |
| Aain Qania | M | M | M |
| Jdeidet Ech Chouf | M | M | M |
| Niha El Chouf | M | M | M |
| Aain Ouzain | M | M | L |
| Baadarane | M | M | M |
| Khreibet Ech Chouf | M | M | M |
| Aammattour | M | M | M |
| Kahlouniet Ech Chouf | M | M | M |

| | | | |
|----------------------|----|----|---|
| Bsaba Ech Chouf | M | M | M |
| Beit Ed Dine | L | L | L |
| Deir El Qamar | L | L | L |
| Kfar Hamal | L | L | L |
| Semqaniye | M | M | L |
| Kfar Qatra | L | L | M |
| Maasser Beit Ed Dine | M | M | M |
| Bchtfine | VH | VH | L |
| Kneisset Ech Chouf | M | L | M |
| Aammiaq Ech Chouf | L | L | L |
| Deir Kouche | L | L | L |

| | | | |
|-------------------|----|---|---|
| Haret Jandal | M | M | M |
| Mazraat Ech Chouf | M | M | M |
| Kfar Nabrahk | M | M | M |
| Mristi | M | M | M |
| Batloun | M | M | M |
| Maasser Ech Chouf | M | M | M |
| Jbaa Ech Chouf | M | M | M |
| Bater | VH | L | L |
| Barouk | M | M | M |
| Bayqoun | M | M | M |

Aley

| City / Village | 15 Dec | 16 Dec | 17 Dec |
|-------------------------|--------|--------|--------|
| Choueifat El Aamrousiye | M | M | M |
| Choueifat El Quoubbe | M | M | M |
| Choueifat El Oumara | L | M | L |
| Deir Qoubel | L | L | L |
| Aaramoun Aaley | L | L | L |
| Aain Drafil | VH | VH | VH |
| Sirhmoul | VH | VH | L |
| Baaouerta | L | L | L |
| Bchamoun | L | L | L |
| Daqqoun | VH | VH | L |
| Aain Aanoub | L | L | L |
| Blaybel | L | L | L |
| Houmal | L | L | L |
| Bdadoun | L | VH | L |
| Bsous | L | VH | L |
| Aaley | L | L | M |
| Kahhale | L | VH | L |
| Qmatiye | VH | VH | VH |
| Aain Er Roummane Aaley | VH | VH | L |
| Bmakine | L | VH | L |
| Bkhichtay | L | L | M |
| Ghaboune | L | L | L |

| City / Village | 15 Dec | 16 Dec | 17 Dec |
|---------------------------|--------|--------|--------|
| Bou Zride | M | M | M |
| Dfoun | L | L | L |
| Richmaiya | L | L | L |
| Aain Traz | L | VH | L |
| Selfaya | L | L | M |
| Aaley Bsatine | L | L | L |
| Rimhala | M | L | L |
| Binney | L | L | L |
| Aain Ksour | L | L | L |
| Jisr El Qadi | L | L | L |
| Aabey | L | L | L |
| Kfar Matta | L | L | L |
| Bhamdoun El Mhatta | M | M | M |
| Bhamdoun Ed Dayaa | M | M | M |
| Chanay | M | M | M |
| Btalloun | M | M | M |
| Majdel Baana | M | M | M |
| Saoufar | M | M | L |
| Aain El Halazoun | L | L | L |
| Bedghan Oua Ouadi Bedghan | M | M | M |
| Homs Oua Hama | VH | VH | VH |
| Mansouriyet Bhamdoun | M | M | M |

| | | | |
|----------------------|----|----|---|
| Aain Ej Jdide Aaley | M | M | M |
| Behouara | M | M | M |
| Aaytat | L | L | L |
| Souq El Gharb | L | L | L |
| Taazaniye | M | M | M |
| Rijme | M | M | M |
| Keyfoun | M | M | M |
| Chimlane | L | L | L |
| Kfar Aamay | VH | VH | L |
| Bayssour Aaley | L | L | L |
| Douair Er Remmane | L | L | L |
| Rouayssat En Naamane | L | L | M |
| Mejdlaiya | M | M | M |
| Aaynab | L | L | L |
| Chartoun | L | VH | L |

| | | | |
|-----------------------|---|----|---|
| Mchekhti | L | L | L |
| Charoun | M | M | M |
| Btater | M | M | M |
| Ighmid | L | L | M |
| Aazouniye | M | M | M |
| Mcherfe | M | M | M |
| Habramoun | M | M | M |
| Bserrine | L | L | L |
| Ramlie | L | L | L |
| Maasrati | L | VH | L |
| Mazraat En Nahr Aaley | M | M | M |
| Aain Dara | M | M | L |
| Mrayjat Aaley | M | M | M |
| Bmahray | M | M | M |

Kasrouane

| City / Village | 15 Dec | 16 Dec | 17 Dec |
|-----------------------|--------|--------|--------|
| Jounie Sarba | L | L | L |
| Zouk Mkayel | M | M | M |
| Jounie Ghadir | E | E | VH |
| Zouk Mousbeh | M | M | M |
| Jounie Haret Sakhr | VH | L | L |
| Sahel Aalma | VH | VH | L |
| Ouata Sillam | L | L | L |
| Kfar Yassine | M | M | M |
| Tabarja | L | L | M |
| Adma Oua Dafine | L | L | L |
| Safra Kesrouane | M | M | M |
| Bouar | M | M | M |
| Aaqaiibe Kesrouane | M | M | M |
| Bqaq Ed Dine | M | M | M |
| Kharayeb Nahr Ibrahim | L | L | M |
| Aqajltoun | M | M | M |
| Balloune | M | M | M |
| Shayle Kesrouane | L | L | L |

| City / Village | 15 Dec | 16 Dec | 17 Dec |
|-------------------|--------|--------|--------|
| Ghine | VH | VH | L |
| Hsayn | VH | VH | L |
| Daraaoun | VH | VH | VH |
| Hayata | L | L | M |
| Chahtoul | M | M | M |
| Zaaitre | M | M | M |
| Jouret E Tourmos | VH | VH | L |
| Maaysra Kesrouane | L | L | L |
| Jouret Mhad | M | M | M |
| Aazra ouel Aazr | M | M | M |
| Ghbale Kesrouane | M | M | M |
| Jouret Bedrane | M | M | M |
| Mradiye | VH | VH | L |
| Bizhel | VH | VH | VH |
| Nahr Ed Dahab | M | M | M |
| yahchouch | VH | VH | L |
| Zaitoun | L | L | M |
| Ighbe | M | M | M |

| | | | | | | | |
|--------------------|----|----|----|-------------------------|---|---|----|
| Daraiya Kesrouane | M | M | M | Rayfoun | M | M | M |
| Aain Er Rihane | VH | VH | L | Qleiaat Kesrouane | M | M | M |
| Jaaita | L | L | L | Mazraat Mrah El Mir | M | L | L |
| Aintoura Kesrouane | L | L | M | Aachqout | M | M | M |
| Mazraat Er Ras | VH | VH | L | Faytroun | M | M | L |
| Ghazir | VH | L | L | Beqaata Aachqout | M | M | L |
| Bourj El Ftouh | VH | L | L | Raachine | M | M | L |
| Chnanaair | E | VH | VH | Kfar Dibiane | M | M | L |
| Jdaidet Ghazir | VH | VH | L | Beqaata Kanaan | M | M | M |
| Ghosta | VH | VH | L | Kfar Tay Kesrouane | M | M | M |
| Maarab | VH | VH | L | Bqaatouta | M | M | M |
| Dlebta | E | VH | VH | Ouata El Jaouz | M | M | L |
| Batha | E | E | VH | Mayrouba | M | M | L |
| Aaramoun Kesrouane | VH | VH | L | Aain Ed Delbe Kesrouane | M | M | L |
| Kfour Kesrouane | VH | VH | L | Mghayer | M | M | L |
| Ghidras | VH | L | L | Hrajel | L | L | L |
| Harharaya | E | VH | VH | Faraya | L | L | L |
| Deir Baqlouch | E | E | VH | Chouane | E | E | VH |
| Bzoummar | M | M | M | Mchaa Kfar Dibiane | L | L | L |
| Harissa Kesrouane | E | E | VH | Mchaa Faraya | L | L | L |
| Nammoura Kesrouane | L | L | L | Mchaa El Ftouh | L | L | L |

Jubail

| City / Village | 15 Dec | 16 Dec | 17 Dec | City / Village | 15 Dec | 16 Dec | 17 Dec |
|-----------------|--------|--------|--------|----------------|--------|--------|--------|
| Jbayl | M | M | M | Fatre | VH | VH | L |
| Mastita | M | M | M | Kfoun | M | M | M |
| Qartaboun | M | M | M | Bintaael | M | M | M |
| Blat Jbeil | L | L | M | Beit Habbaq | M | M | M |
| Edde Jbayl | M | M | M | kafr | M | M | M |
| Aamchit | M | M | L | Jlisse | M | M | M |
| Halate | M | M | M | Bejje | M | M | M |
| Hasrayel | M | M | M | Ghalboun | M | M | M |
| Rihanet Jbayl | M | M | M | Chamate | M | M | M |
| Jeoddayel Jbayl | M | M | M | Hbaline | M | M | M |
| Nahr Ibrahim | M | M | M | Bmehrayn | M | M | M |
| Mounsef | L | L | L | Hboub | M | M | M |

| | | | |
|---------------------|---|---|----|
| Berbara Jbayl | L | L | L |
| Kfar Kidde | M | M | M |
| Ehmej | M | M | M |
| Aalmat Ech Chamliye | L | M | M |
| Mazraat El Maaden | M | M | M |
| Aalmat Ej Jnoubiye | M | M | M |
| Tourzaiya | M | M | M |
| Ferhet | L | L | M |
| Michmich Jbayl | M | M | M |
| Aalita | M | M | M |
| Souanet Jbayl | L | M | M |
| Aain Ed Delbe Jbayl | M | M | M |
| Frat | E | E | VH |
| Kfar Baal | M | M | M |
| Hjoula | M | M | M |
| Aain Jrain | E | E | VH |
| Hsoun | L | M | M |
| Mchane | L | M | M |
| Lehfed | M | M | L |
| Habil | M | M | M |
| Jouret El Qattine | M | M | M |
| Birket Hjoula | M | M | M |
| Adonis Jbayl | L | L | M |
| Ras Osta | M | M | M |
| Bichtlida | M | M | M |
| Bchille Jbayl | M | M | M |
| Zibdine Jbayl | L | L | L |
| Haqel | M | M | M |
| Kharbet Jbayl | M | M | M |
| Qottara Jbayl | M | M | L |
| Brayj Jbayl | M | M | M |
| Sebrine | M | M | M |
| Aabaydat | M | M | M |
| Mayfouq | M | M | M |
| Behdaydat | M | M | M |
| Ramout | M | M | M |
| Saqiet El Khayt | M | M | M |

| | | | |
|-------------------------|---|---|----|
| Hsarat | M | M | M |
| Kfar Mashoun | M | M | M |
| Aain Kfaa | M | M | M |
| Ghofrine | M | M | M |
| Maad | M | M | M |
| Gharzouz | M | M | M |
| Chikhane | L | L | L |
| Chmout | L | L | M |
| Bekhaaz | M | M | M |
| Fghal | M | M | M |
| Bayzoun | M | M | M |
| Qartaba | L | L | L |
| Mar Sarkis | M | M | M |
| Aain El Ghouaye | M | M | M |
| Mazraat Es Siyad | M | M | M |
| Hdeine | M | M | M |
| Janne | E | E | VH |
| Lassa | M | M | M |
| Seraaiita | M | M | M |
| Ghabat | M | M | M |
| Mghayre Jbeil | M | M | M |
| Tadmor | L | L | M |
| Yanouh Jbayl | M | M | M |
| Qorqraiya | E | E | VH |
| Boulhos | L | L | L |
| Majdel El Aqoura | L | L | L |
| Laqlouq | L | L | L |
| Afqa Jbayl | M | M | L |
| Qahmez | M | M | M |
| Aaqoura | L | L | L |
| Aarab El Lahib | L | L | L |
| Saqi Richmaya | L | L | L |
| Jaj | L | L | L |
| Tartij | L | L | L |
| Hema Mar Maroun Aannaya | L | L | L |
| Hema Er Rehban | L | L | L |
| Aarasta | M | M | M |

Kfar Qouas

M

M

M

of Fires: 2024 till Yesterday



80

Forest



66

Fruitful Trees



441

Grasslands

South



Sunny

06:34 ☀️ 16:34 EET

Feels Like: 19°C

Wind: 10km/H SE

Humidity: 28%

Pressure: 1026.08mbar

UV Index: 3

Mon

19°C / 12°C



Tue

19°C / 12°C



Wed

20°C / 12°C



Hotlines



Civil Defence (125)



Ministry of Interior & Municipalities (1766)



Lebanese Red Cross (140)



Internal Security Forces (112)



Army Command Operations (117)



Emergency (71/944020)

Saida

| City / Village | 15 Dec | 16 Dec | 17 Dec | City / Village | 15 Dec | 16 Dec | 17 Dec |
|--------------------|--------|--------|--------|-------------------------|--------|--------|--------|
| Saida El Oustani | L | L | L | Mazraat Sinai | M | M | L |
| Saida El Qadimeh | L | L | L | Loubie | L | L | L |
| Saida Ed Dekermane | L | L | L | Daoudiye | L | L | L |
| Bramiye | L | L | L | Khirbet Ed Douair Saida | L | L | L |
| Hlaliye Saida | L | L | L | Babliye | L | L | L |
| Haret Saida | M | M | M | Khartoum | M | M | M |
| Miye ou Miye | M | M | L | Ghassaniye | M | M | M |
| Salhiyet Saida | M | M | M | Sarafand | L | L | L |
| Saida Kefraya | L | L | L | Qaaqaiyet Es Snaoubar | L | L | L |
| Majdelyoun | M | M | M | Bissariye | L | L | L |
| AAbra Saida | M | M | M | Kaoutariyet Es Siyad | M | M | L |
| Qraiyet Saida | M | M | L | Tebna | M | M | M |

| | | | |
|--------------------------------|---|---|---|
| Bqosta | M | M | M |
| Aain Ed Delb | L | L | L |
| Ghaziye | L | L | L |
| Maghdouche | M | M | M |
| Darb Es Sim | M | M | M |
| Qennarit | M | M | M |
| Zeita | M | M | M |
| Zaghdraiya | M | M | M |
| Tanbourit | M | M | M |
| Jazira Saida | M | M | M |
| Mazraat El Yahoudiye Aaitaniye | L | L | L |
| Mzaraat El Ouasta | L | L | L |
| Matariyet Ech Choumar | M | M | M |
| Arzai | M | M | M |
| Mazraat Kfar Beda | L | L | L |
| Khayayeb Saida | M | M | M |
| Mazraat Jamjim | L | L | L |
| Hartiye | L | L | L |
| Mazraat El Mhaydale | M | M | M |
| Mazraat Kaoutariyet Er Riz | L | L | L |
| Zrariye | M | M | M |
| Mazraat Sari | L | L | L |
| Mazraat Deir Taqla | L | L | L |
| Mazraat Oussamiyat | M | M | M |
| Aadloun | L | L | L |
| Insariye | L | L | L |

| | | | |
|------------------------|---|----|---|
| Mazraat Snaiber | M | M | M |
| Teffahta | M | M | M |
| Saksakiye | L | L | L |
| Merouaniye | M | M | M |
| Najjariye | L | L | L |
| Aadoussiye | L | L | L |
| Khirbet El Bassal | M | M | M |
| Mazraat Mseileh | M | M | M |
| Hajje | L | L | M |
| Mazraat El Houssainiye | L | L | L |
| Khzaiz | L | L | M |
| Maamriye | M | M | M |
| Aaqtanit | M | M | M |
| Erkay | L | L | M |
| Bnaafoul | M | M | M |
| Aarab Tabbaya | M | M | M |
| Mtayriye | M | M | M |
| Mazraat Aarab Soukkar | M | M | M |
| Aarab Ej Jall | M | M | L |
| Berti | L | L | L |
| Aanqoun | M | M | M |
| Kfar Beit | M | M | M |
| Kfar Hatta Saida | M | M | M |
| Kfar Chellal | M | M | M |
| Kfar Melki Saida | M | M | M |
| Sfenta | L | VH | L |

Sour

| City / Village | 15 Dec | 16 Dec | 17 Dec |
|---------------------|--------|--------|--------|
| Sour | L | L | L |
| Borj Ech Chemali | L | L | L |
| Batoulay | L | L | L |
| Deir Qanoun El Aain | L | L | L |
| Jouaiya | M | M | M |
| Debaal Sour | M | L | L |
| Majdel | M | L | L |

| City / Village | 15 Dec | 16 Dec | 17 Dec |
|---------------------|--------|--------|--------|
| Deir Qanoun En Nahr | M | M | M |
| Chehour | M | M | M |
| Srifa | M | M | M |
| Kneisset Sour | M | M | M |
| Halloussiye | M | M | M |
| Tayr Falsay | M | M | M |
| Touayri | M | M | M |

| | | | |
|-----------------|---|---|---|
| Mazraat Mechref | M | M | M |
| Aaytit | M | M | M |
| Ouadi Jilo | L | M | M |
| Yanouh Sour | M | M | M |
| Bafliyé | M | M | M |
| Deir Aames | M | M | M |
| Barich | M | M | L |
| Biyad | M | M | M |
| Selaa Sour | M | M | M |
| Qana | M | M | M |
| Maarake | L | L | L |
| Neftakhiye | M | M | M |
| Maaroub | L | L | L |
| Recheknanay | M | M | M |
| Jennata | L | L | L |
| Derdaghaiya | M | M | L |
| Sadiqine | L | L | L |
| Aaiye | M | M | M |
| Aain Baal | L | L | L |
| Hmairi Sour | L | L | L |
| Mheilib | L | L | L |
| Bazouriye | L | L | L |
| Hanaouay | M | M | M |
| Bestiyat | M | M | M |
| Deir Kifa | M | M | M |
| Tayr Debbe | L | L | L |
| Chehabiye | M | M | M |
| Arzoun | L | L | L |
| Niha Sour | L | L | L |
| Rmadiye | M | M | M |
| Toura | L | L | M |

| | | | |
|------------------------|---|---|---|
| Bedias | M | M | M |
| Aabbassiyet Sour | L | L | L |
| Chaaitiye | M | M | M |
| Jbal El Botm | M | M | M |
| Mazraat Tayr Semhat | M | M | M |
| Borj Rahhal | L | L | L |
| Marnba | L | L | L |
| Chihine | M | M | M |
| Zebqine | M | M | M |
| Qlaile Sour | L | L | L |
| Aain Abou Abdallah | L | L | L |
| Jibbayn | M | M | M |
| Henniye | L | L | L |
| Aaziye | M | M | M |
| Tayr Harfa | M | M | M |
| Mansouri Sour | M | M | M |
| Majdelzoun | M | M | M |
| Chamaa | M | M | M |
| Iskandarouna Sour | M | M | M |
| Yarine | M | M | M |
| Merouahine | M | M | M |
| Borj En Naqoura | M | M | M |
| Hamoul | M | M | M |
| Aalma Ech Chaab | M | M | M |
| Jijim | M | M | M |
| Abou Chech | M | M | M |
| Boustane | M | M | M |
| Btaychiye | M | M | M |
| Dhayra | M | M | M |
| Mazraat Ez Zalloutiyeh | M | M | M |

Jezzine

| City / Village | 15 Dec | 16 Dec | 17 Dec |
|----------------|--------|--------|--------|
| Jezzine | M | M | M |
| Wadi Jezzine | L | L | L |

| City / Village | 15 Dec | 16 Dec | 17 Dec |
|--------------------|--------|--------|--------|
| Ouadi Baanqoudaine | L | L | L |
| Mjaydel Jezzine | M | M | M |

| | | | |
|-----------------------|----|----|----|
| Qabaa Jezzine | E | VH | VH |
| Qaytoule | VH | VH | VH |
| Bkassine | L | VH | L |
| Homsiye | VH | VH | VH |
| Aaray | VH | VH | L |
| Sabbah | VH | VH | L |
| Haytoura | VH | VH | VH |
| Ghabbatiye | VH | VH | L |
| Benouati Jezzine | L | VH | L |
| Maknounet Jezzine | VH | VH | L |
| Btedine El Leqch | VH | VH | VH |
| Roummanet | M | M | M |
| Machmouche | VH | VH | VH |
| Midane Jezzine | VH | VH | L |
| Jabal Toura | M | M | M |
| Kfar Houne | M | M | M |
| Harf Jezzine | VH | VH | L |
| Bebe | E | VH | VH |
| Zhilita | E | VH | VH |
| Bhannine | VH | VH | L |
| Aazour | VH | VH | VH |
| Taaid | E | E | VH |
| Bisri | L | L | L |
| Mazraat Er Rouhbane | M | M | M |
| Kfar Falous | M | M | M |
| Aain El Mir El Establ | M | M | M |
| Mrah El Hbasse | M | M | M |
| Bayssour Jezzine | L | L | L |
| Haytoule | L | L | L |
| Lebaa | M | M | M |
| Mharbiye | M | M | M |
| Ouadi El Laymoun | L | L | M |
| Sfaray | M | M | M |
| Hassaniye | M | M | M |
| Karkha | L | L | L |
| Choualiq Jezzine | M | M | M |

| | | | |
|--------------------------|----|----|----|
| Dahr Ed Deir | L | M | M |
| Jensnaya | M | M | M |
| Rimat | VH | VH | L |
| Kfar Jarra | M | M | M |
| Saydoun | M | M | M |
| Anane | M | M | M |
| Roum | VH | VH | L |
| Hidab | L | L | M |
| Deir El Qattine | VH | VH | VH |
| Sanaya | VH | VH | VH |
| Qtale Jezzine | L | L | M |
| Jernaya | M | M | M |
| Mazraat El Mathane | M | M | M |
| Srayri | L | L | M |
| Aaramta | M | M | M |
| Mlikh | M | M | M |
| Rihane Jezzine | M | M | M |
| Mazraat | M | M | M |
| Qatrani | L | L | M |
| Louayzet Jezzine | M | M | M |
| Mazraat Khallet Khazen | L | M | M |
| Mazraat Qrouh | L | L | M |
| Mazraat Zighrine Jezzine | L | L | M |
| Chbail | L | L | M |
| Mazraat Louzid Louayziye | L | L | M |
| Sejoud | M | M | M |
| Aaychiye | L | L | M |
| Maraat Ouazaiye | L | L | M |
| Ouardiye | L | L | M |
| Mazraat El Aarqoub | L | L | L |
| Mahmoudiye Jezzine | L | L | M |
| Jarmaq | M | M | M |
| Mazraat Daraya | L | L | M |
| Demachqiye | M | M | M |
| Mazraat Tamra | M | M | M |
| Bouslaya | L | L | L |

of Fires: 2024 till Yesterday



167

Forest



97

Fruitful Trees



298

Grasslands

Nabatiye



Sunny
06:32 ☀️ 16:33 EET

Feels Like: 13°C
Wind: 14km/H SSE
Humidity: 25%
Pressure: 1026.41mbar
UV Index: 3

Mon
16°C / 5°C
☀️

Tue
17°C / 4°C
☀️

Wed
17°C / 4°C
☀️

Hotlines



Civil Defence (125)



Ministry of Interior & Municipalities (1766)



Lebanese Red Cross (140)



Internal Security Forces (112)



Army Command Operations (117)



Emergency (03/305325 & 71/627799)

Hasbaiya

| City / Village | 15 Dec | 16 Dec | 17 Dec |
|---------------------|--------|--------|--------|
| Chebaa Farms | H | H | H |
| Hasbaiya | M | M | L |
| Abou Qamha | M | M | L |
| Aain Jarfa | M | M | M |
| Fardis Hasbaiya | M | M | M |
| Rachaiya El Foukhar | M | M | M |
| Kfar Hamam | M | M | M |
| Hebbariye | M | M | L |
| Chouaya Hasbaiya | M | M | L |
| Aain Qinia | M | M | M |

| City / Village | 15 Dec | 16 Dec | 17 Dec |
|------------------------------------|--------|--------|--------|
| Marj Ez Zouhour Haouch El Qinnaabe | M | M | L |
| Kaoukaba Hasbaiya | M | M | M |
| Salaiyeb | M | M | L |
| Bourghos | M | M | M |
| Meri | M | M | L |
| Kfar Chouba | M | M | L |
| Khalouet Hasbaiya | M | M | M |
| Kfayr Ez Zait | M | M | M |
| Majidiye Hasbaiya | M | M | M |
| Dellafe | M | M | M |

| | | | | | | | |
|--------|---|---|---|-------------------|---|---|---|
| Meimes | M | M | L | Khreibet Hasbaiya | M | M | M |
| Chebaa | M | M | L | | | | |

Nabatiye

| City / Village | 15 Dec | 16 Dec | 17 Dec | City / Village | 15 Dec | 16 Dec | 17 Dec |
|-----------------------|--------|--------|--------|------------------------------|--------|--------|--------|
| Nabatieh Et Tahta | M | M | M | Mazraat El Bayad En Nabatieh | M | M | M |
| Nabatiyeh El Faouka | M | M | L | Charqiye | M | M | M |
| Aali Et Taher | L | L | M | Toul | M | M | L |
| Mazraat Kfarjaouz | M | M | L | Nmairiye | M | M | M |
| Zibdine En Nabatiyeh | M | M | M | Harouf En Nabatiyeh | M | M | L |
| Kfar Roummane | M | M | M | Douair En Nabatiyeh | L | L | L |
| Choukine | M | M | M | Jibchit | L | L | L |
| Habbouch En Nabatiyeh | M | M | M | Mazraat Chalbaal | M | M | M |
| Kfar Tibnit | M | M | M | Mayfadoun | M | M | M |
| Kfour En Nabatieh | M | M | M | Aadchit Ech Chqif | L | L | L |
| Jbaa En Nabatiyeh | L | L | L | Aabba | M | M | L |
| Aain Bou Souar | M | M | M | Kfar Djal En Nabatiyeh | M | M | M |
| Kfarfila | M | M | M | Mazraat Dmoul | L | L | L |
| Aain Qana | M | M | M | Ansar | M | M | M |
| Jarjouaa | L | L | M | Zaoutar El Gharbiye | M | M | M |
| Sarba En Nabatieh | M | M | M | Zaoutar Ech Charqiye | M | M | L |
| Mzaraat El Khreibe | M | M | M | Hamra En Nabattiyeh | M | M | M |
| Houmine El Faouqa | M | M | M | Qsaibet En Nabatiyeh | M | M | L |
| Hmaile | M | M | M | Arnoun | M | M | M |
| Aarab Salim | M | M | M | Qaaqaaiyet Ej Jisr | M | M | M |
| Roumine | M | M | M | Mazraat Qalaat El Meis | L | L | L |
| Houmine Et Tahta | M | M | M | Mazraat Bsaffour | L | L | L |
| Aazzi | L | L | M | Braiqeaa | M | M | L |
| Bfaroue | M | M | M | Kfar Sir | M | M | M |
| Zefta | M | M | M | Yohmor En Nabatiyeh | M | M | M |
| Deir Ez Zahrani | M | M | M | Sir El Gharbiye | M | M | L |

Bint Jubail

| City / Village | 15 Dec | 16 Dec | 17 Dec | City / Village | 15 Dec | 16 Dec | 17 Dec |
|----------------|--------|--------|--------|----------------|--------|--------|--------|
| Bent Jbayl | L | L | M | Khirbet Selm | M | M | M |

| | | | |
|------------------------|---|---|---|
| Aaynata Bent Jbayl | M | M | M |
| Maroun Er Ras | M | M | M |
| Salhani | M | M | L |
| Aain Ibl | M | M | M |
| Aaintaroun | M | M | M |
| Yaroun | M | M | M |
| Rmaich | M | M | M |
| Qatmoun | L | L | L |
| Aayta Ech Chaab | M | M | M |
| Ramyet Bent Jbayl | M | M | M |
| Tibnine | M | M | M |
| Soultaniyet Bent Jbayl | M | M | M |
| Safad Al Battikh | M | M | M |
| Jmajjme | M | M | M |
| Aaita Ej Jabal | M | M | M |
| Baraachit | M | L | M |
| Chaqra | L | L | L |
| Haddatha | M | M | M |

| | | | |
|-------------------------|---|---|---|
| Beit Yahoun | M | M | M |
| Haris | M | M | M |
| Deir Ntar | M | M | M |
| Kfar Dounine | M | M | M |
| Kounine | L | L | L |
| Tiri | M | M | M |
| Kafra Bant Jbayl | M | M | M |
| Qalaouiye | M | M | M |
| Borj qalaouiye | M | M | M |
| Srobbine | M | M | M |
| Rachaf | M | M | M |
| Ghandouriyet Bent Jbayl | M | M | M |
| Froun | M | M | M |
| Yater | M | M | M |
| Debl | M | M | M |
| Hanine | M | M | M |
| Beit Lif | M | M | M |
| Qaouzah | M | M | M |

Marjaayoun

| City / Village | 15 Dec | 16 Dec | 17 Dec |
|-----------------------|--------|--------|--------|
| Marjaayoun | M | M | M |
| Boueyda Marjaayoun | L | M | M |
| Dibbine | M | M | M |
| Ibl Es Saqi | M | M | M |
| Blat Marjaayoun | M | M | M |
| Mazraat Doumiat | L | M | M |
| Borj El Moulouk | M | M | L |
| Qlaiaa | L | M | M |
| Khiyam Marjaayoun | M | M | L |
| Aain Aarab Marjaayoun | M | L | L |
| Deir Mimas | M | M | M |
| Mazraat Sarada | L | L | L |
| Houra | L | L | L |
| Aamra | M | M | M |
| Aadaysse Marjaayoun | M | M | M |
| Bany haiyane | M | M | M |

| City / Village | 15 Dec | 16 Dec | 17 Dec |
|---------------------|--------|--------|--------|
| Deir Siriane | M | M | M |
| Taybet Matjaayoun | M | M | L |
| Houla | M | M | M |
| Talloussa | L | M | M |
| Markaba | M | M | M |
| Mhaibib | L | L | L |
| Meiss Ej Jabal | L | L | L |
| Aadchit El Qoussair | M | M | M |
| Rabb Et Tlatine | M | M | L |
| Qabrikha | M | M | M |
| Qantara | L | L | M |
| Majdel Selm | M | M | M |
| Saouanet Marjayoun | M | M | M |
| Touline | L | M | M |
| Blida | L | L | L |
| Aalmane Marjaayoun | M | M | M |

Kfar Kila

M

M

M

of Fires: 2024 till Yesterday



248

Forest



221

Fruitful Trees



1349

Grasslands

Bekaa



12°

Sunny

06:32 ☀️ 16:30 EET

Feels Like: 11°C

Wind: 8km/H SW

Humidity: 34%

Pressure: 1026.41mbar

UV Index: 3

Mon

14°C / 3°C



Tue

14°C / 3°C



Wed

14°C / 2°C



Hotlines



Civil Defence (125)



Ministry of Interior & Municipalities (1766)



Lebanese Red Cross (140)



Internal Security Forces (112)



Army Command Operations (117)



Emergency (71/330255)

Zahle

| City / Village | 15 Dec | 16 Dec | 17 Dec |
|------------------------------|--------|--------|--------|
| Zahle El Midane | M | M | M |
| Zahle Haouch Ez Zaraane | VL | VL | VL |
| Zahle Mar Gerges | L | L | L |
| Zahle El Berbara | L | L | L |
| Zahle El Maallaqa | L | L | L |
| Zahle Maallaqa Aradi | L | L | L |
| Zahle Haouch El Oumara Aradi | L | L | L |
| Zahle Saydet En Najat | L | L | L |
| Zahle Haouch El Oumara | L | L | L |

| City / Village | 15 Dec | 16 Dec | 17 Dec |
|------------------|--------|--------|--------|
| Saadnayel | L | L | L |
| Qabb Elias | L | L | L |
| Haouch Mandara | L | L | L |
| Mrayjat Zahle | M | M | L |
| Bouarej | L | L | L |
| Haouch Es Siyade | L | L | L |
| Ouadi Ed Delm | L | M | L |
| Haouch Qayssar | L | L | L |
| Barr Elias | L | L | L |

| | | | |
|----------------------|---|---|---|
| Zahle Aradi | L | L | L |
| Zahle Mar Elias | L | L | L |
| Fourzol | L | L | L |
| Touaite Zahle | L | L | L |
| Nabi Ayla | L | L | L |
| Hazerta | L | L | L |
| Ablah | L | L | L |
| Qaa Er Rim | L | L | L |
| Niha Zahle | L | L | L |
| Ksara | L | L | L |
| Mazraat Er Remtaniye | L | L | L |
| Ouadi El Aarayech | L | L | L |
| Chtaura | L | L | L |
| Zebdoul | L | L | L |
| Makse | L | L | L |
| Taalbaya | L | L | L |
| Jdita | L | L | L |
| Taanayel | L | L | L |

| | | | |
|----------------------|---|---|---|
| Mzaraat Zahle | M | M | L |
| Tcheflik Edde Haouch | L | L | L |
| Aanjar Haouch Moussa | L | L | L |
| Majdel Aanjar | L | L | L |
| Riyaq | L | L | L |
| Faouch Hala | L | L | L |
| Aali En Nahri | L | L | L |
| Haouch El Aamara | L | L | L |
| Hoshmosh | L | L | L |
| Deir El Ghazal | L | L | L |
| Qoussaya | L | L | L |
| Nasriyet Rizk | L | L | L |
| Raait | L | L | L |
| Terbol Zahle | L | L | L |
| Massa | L | L | L |
| Aain Kfar Zabad | L | L | L |
| Dalhamiyet Zahle | L | L | L |
| Kfarzabad | L | L | L |

West Bekaa

| City / Village | 15 Dec | 16 Dec | 17 Dec |
|---------------------|--------|--------|--------|
| Machghara | L | M | L |
| Aain Et Tine BG | M | M | M |
| Aaytanit | L | M | L |
| Bab Mareaa | L | M | L |
| Deir Aain Ej Jaouze | L | M | L |
| Saghbine | M | M | M |
| Loussa | L | L | M |
| Aain Zebde | M | M | M |
| Khirbet Qanafar | L | L | L |
| Kafraiya BG | L | L | L |
| Aana | L | L | L |
| Deir Tahniche | L | L | L |
| Mansoura BG | L | L | L |
| Aammiaq BG | L | L | L |
| Joubb Jannine | L | L | L |

| City / Village | 15 Dec | 16 Dec | 17 Dec |
|------------------------|--------|--------|--------|
| Baaloul BG | M | M | L |
| Ghazze | L | L | L |
| Soultan Yaacoub Faouqa | L | L | L |
| Khiara | L | L | L |
| Qaraaoun | L | L | L |
| Soltan Yacoub el Aradi | L | L | L |
| Manara Hammara BG | L | L | L |
| Dakoue | L | L | L |
| Haouch El Harime | L | L | L |
| Souairi | L | L | L |
| Sohmor | L | L | L |
| Libbaya BG | M | M | L |
| Marj BG | L | L | L |
| Yohmor BG | M | M | L |
| Zilaya | M | M | M |

| | | | |
|----------------|---|---|---|
| Lala | M | M | L |
| Kamed El Laouz | L | L | L |
| Tall Znoun | L | L | L |

| | | | |
|----------------|---|---|---|
| Maydoun | M | M | M |
| Qelaya | M | M | M |
| Raouda Istabel | L | L | L |

Rachaiya

| City / Village | 15 Dec | 16 Dec | 17 Dec |
|-------------------|--------|--------|--------|
| Rachaiya | L | L | L |
| Aaqabet Rachaya | L | L | L |
| Aayha | L | L | L |
| Bakkifac Rachaya | M | M | L |
| Dahr El Ahmar | L | L | L |
| Beit Lahia | M | M | L |
| Tannoura | M | M | M |
| Kfar Qouq | L | L | L |
| Kfar Denis | L | L | L |
| Mhaiydse Rachaiya | L | L | L |
| Kaoukaba Bou Arab | L | L | L |
| Aain Rouha | M | M | M |
| Khirbet Rouha | L | L | L |
| Kfar Lichki | L | L | L |

| City / Village | 15 Dec | 16 Dec | 17 Dec |
|----------------------------------|--------|--------|--------|
| Rafid Rachaiya | L | L | L |
| Haouch El Qinnabe Rachaiya | M | M | L |
| Biret Rachaiya | L | L | L |
| Aain Aarab Rachaiya | L | L | L |
| Aain Aata | L | L | L |
| Majdel Balhis | L | L | L |
| Bakka | L | L | L |
| Mdoukha | L | L | L |
| Yanta | L | L | L |
| Deir El Aachayer | L | L | L |
| Selsata Mazraat Deir El Aachayer | L | L | L |
| Aayta El Foukhar | L | L | L |
| Helouet Rachaiya | L | L | L |
| Nabi Safa | M | M | L |

of Fires: 2024 till Yesterday



63

Forest



60

Fruitful Trees



363

Grasslands

Baalbek_Hermel



Sunny

06:31 ☀ 16:28 EET

Feels Like: 9°C

Wind: 13km/H SW

Humidity: 28%

Pressure: 1026.08mbar

UV Index: 3

Mon

13°C / 2°C



Tue

13°C / 1°C



Wed

14°C / 3°C



Hotlines



Civil Defence (125)



Ministry of Interior & Municipalities (1766)



Lebanese Red Cross (140)



Internal Security Forces (112)



Army Command Operations (117)



Emergency (71/497040)

Hermel

| City / Village | 15 Dec | 16 Dec | 17 Dec |
|-----------------------|--------|--------|--------|
| Hremel | L | L | L |
| Michaa Mrjehine | M | M | L |
| Zighrine | M | M | L |
| Charbine El Hermel | M | M | M |
| Ras Baalbek El Gharbi | L | L | L |

| City / Village | 15 Dec | 16 Dec | 17 Dec |
|-------------------------|--------|--------|--------|
| Ras Baalbek Ouadi Faara | L | L | L |
| Ouadi Faara | L | L | L |
| Hermel Jbab | L | M | L |
| Maaysra El Hermel | L | M | L |

Baalbek

| City / Village | 15 Dec | 16 Dec | 17 Dec |
|-------------------------|--------|--------|--------|
| Baalbek | L | L | L |
| Aain Bourday | L | L | L |
| Douris | L | L | L |
| Iaat | VL | L | L |
| Aadous | VL | L | L |
| Aamchki | L | L | L |
| Haouch Tall Safiye | VL | L | L |
| Taibet Baalbek | L | L | L |
| Nahle baalbek | L | L | L |
| Majdaloun | VL | L | L |
| Maqne | L | L | L |
| Aain Es Siyaa Chadoura | L | L | L |
| Saaide | L | L | L |
| Jebaa | L | L | L |
| Kfar Dane | L | L | L |
| Hadath Baalbek | L | L | L |
| Ras Baalbek Es Sahel | L | L | L |
| Fekehe | L | L | L |
| Aain Baalbek | L | L | L |
| Bajjaje | L | L | L |
| Nabi Osmane | L | L | L |
| Ras Baalbek Ech Charqi | L | L | L |
| Aarsal | L | L | L |
| Laboue | L | L | L |
| Zabboud | L | L | L |
| Qaa Baalbek | VL | L | L |
| Deir Mar Maroun Baalbek | L | L | L |
| Halbata | L | L | L |
| Moqraq | L | L | L |
| Qaa Ouadi El Khanzir | L | L | L |
| Qaa Baayoun | L | L | L |
| Sbouba | L | M | L |
| Harabta | L | L | L |
| Qaa Jouar Maqiye | L | L | L |
| Nabha Ed Damdoun | L | L | L |
| Chaat | L | L | L |

| City / Village | 15 Dec | 16 Dec | 17 Dec |
|---------------------|--------|--------|--------|
| Bechouat | L | L | L |
| Barqa | L | L | L |
| Riha | L | L | L |
| Dar El Ouassaa | L | L | L |
| Btedaai | L | L | L |
| Aaynata Baalbek | L | L | L |
| Yammoune | L | L | L |
| Bednayel Baalbak | L | L | L |
| Qsarnaba | L | L | L |
| Temnine El Faouqa | L | L | L |
| Beit Chama | L | L | L |
| Haouch Er Rafqa | L | L | L |
| Mousraye | L | L | L |
| Slouqi | L | L | L |
| Kfar Dabach | L | L | L |
| Chmistar | L | L | L |
| Haouch En Nabi | L | L | L |
| Haouch Snaid | L | L | L |
| Taraiya | L | L | L |
| Serraaine Et Tahta | L | L | L |
| Hizzine | L | L | L |
| Khodr Baalbek | L | L | L |
| Nabi Chit | L | L | L |
| Jenta | L | L | L |
| Yahfoufa | L | L | L |
| Haour Taala | L | L | L |
| Brital | L | L | L |
| Khreibet Baalbek | L | L | L |
| Mazraat beit Mchaik | L | L | L |
| Bouday | L | L | L |
| Maaraboun | L | L | L |
| Ham | L | L | L |
| Aain El Barnaya | L | L | L |
| Chlifa | L | L | L |
| Chaaibe | L | L | L |
| Nabi Chbay | L | L | L |

| | | | |
|------------------|---|---|---|
| Qarha Baalbek | L | M | L |
| Ram Baalbek | L | M | L |
| Youmine | L | L | L |
| Deir El Ahmar | L | L | L |
| Kneisset Baalbek | L | L | L |

| | | | |
|-----------------------|---|---|---|
| Aain Ej Jaouz Baalbek | L | L | L |
| Tfail | L | L | L |
| Kharayeb El Hermel | M | M | L |
| Ouadi El Aaoss | L | L | L |